

A woman's face is the central focus, looking upwards with a thoughtful expression. Her face is partially obscured by a collage of various images, including a globe, a starry night sky, a butterfly, a human eye, a compass, and a colorful abstract shape. The background is a soft, blue, cloudy sky. The text is overlaid on the lower half of the image.

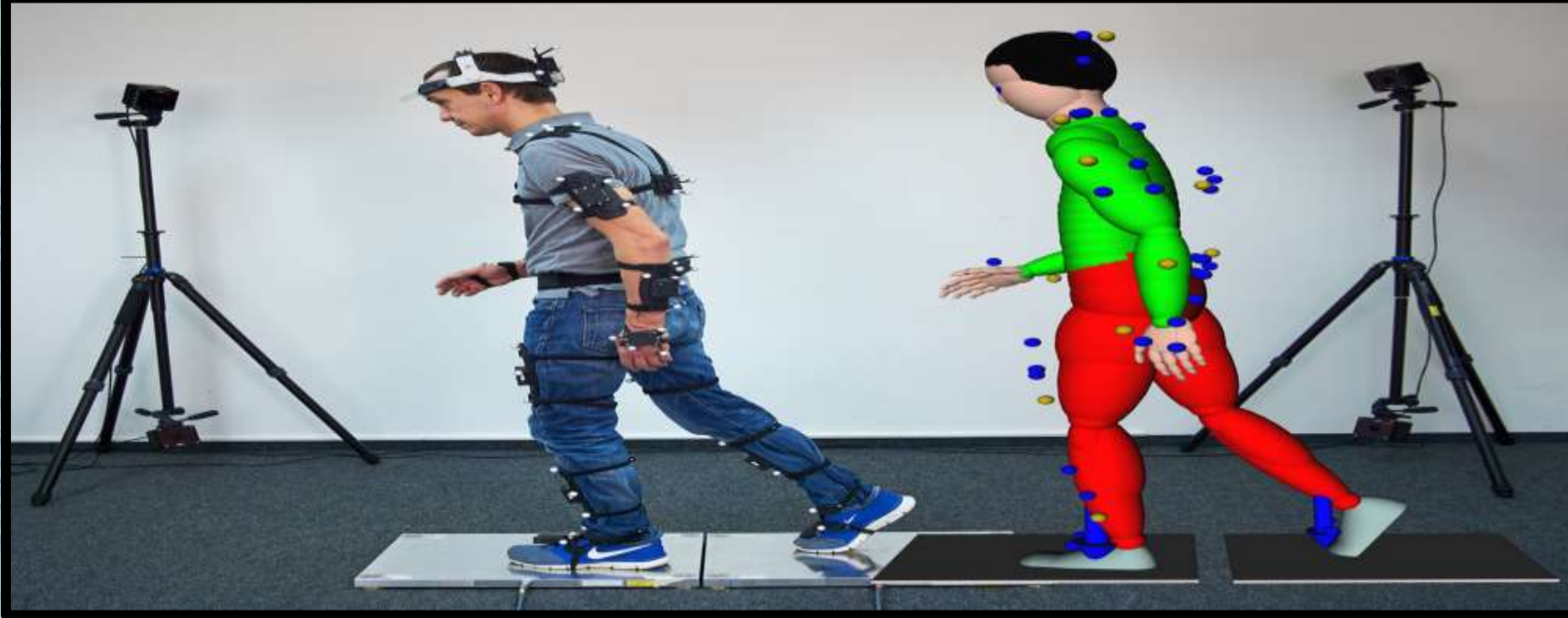
Test Your Knowledge
on
Basic Networking and Virtual reality
(For students above 15 years)

Manmeet Singh, NA
&
Science Guides. Cyber Gallery



Q1. HMD stands for?

- a) Head Mounted Display
- b) Head Masked Display
- c) Head Made Display
- d) Head Mounted Detection



Q2. _____ keeps track of position.

- a) Motion analyzers
- b) Motion Trackers
- c) HMD
- d) SMD



Q3. What are the 3 types of VR?

- a) Immersive, 3D, non-immersive
- b) Immersive, semi-immersive, non immersive
- c) Digital, semi-immersive, projective
- d) 3D, non-immersive, digital



Q4. Which is the oldest phone hacking techniques used by hackers to make free calls?

- a) Phishing
- b) Spamming
- c) Phreaking
- d) Cracking



Q5. Name the term used for creating Illusion of immersion by projecting stereo images on the walls and floor of a room?

- a) Computer Activated Video Environment. Computing (CAVE)
- b) Binocular Omni-Orientation Monitor (BOOM)
- c) Graphical User Interface (GUI)
- d) Head Mounted Display (HMD)



Q6. It is a mediated environment which creates the sensation in a user of being present in a (physical) surrounding.

- a) World Wide Web (WWW)
- b) Virtual Reality (VR)
- c) Head Mounted Display (HMD)
- d) Graphical User Interface (GUI)



Q7. A network router joins two _____ together ?

- a. Computers
- b. Switches
- c. Networks
- d. Gateway



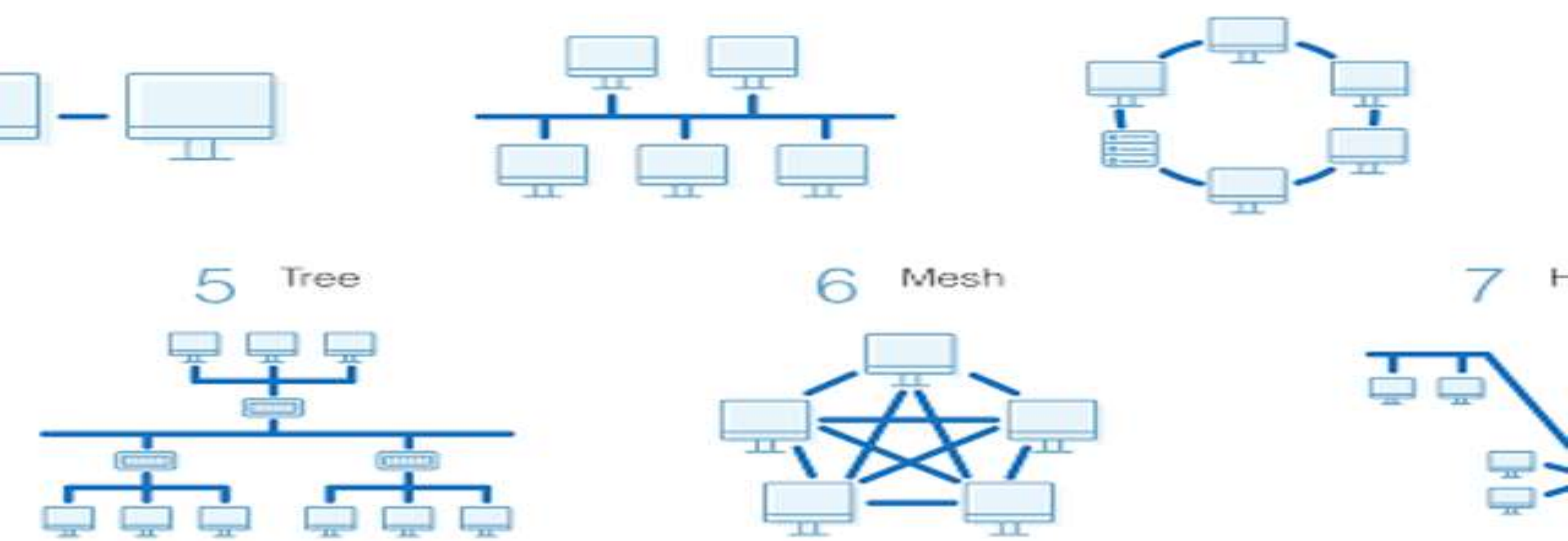
Q8 Which definition best fits “augmented reality”?

- a) Technology that turns physical objects into digital objects
- b) Technology that overlays digital information on top of real world items
- c) Technology that completely immerses users in a new digital environment
- d) Technology that can achieve a human-level understanding of images



Q9. which of the following is independent malicious program that need not any host program to execute.

- a) Trap doors
- b) Trojan horse
- c) Virus
- d) Worm



Q10. In immersive technology, what does MR stand for?

- a) Mixed Reality
- b) Measured Reality
- c) More Reality
- d) Mirrored Reality



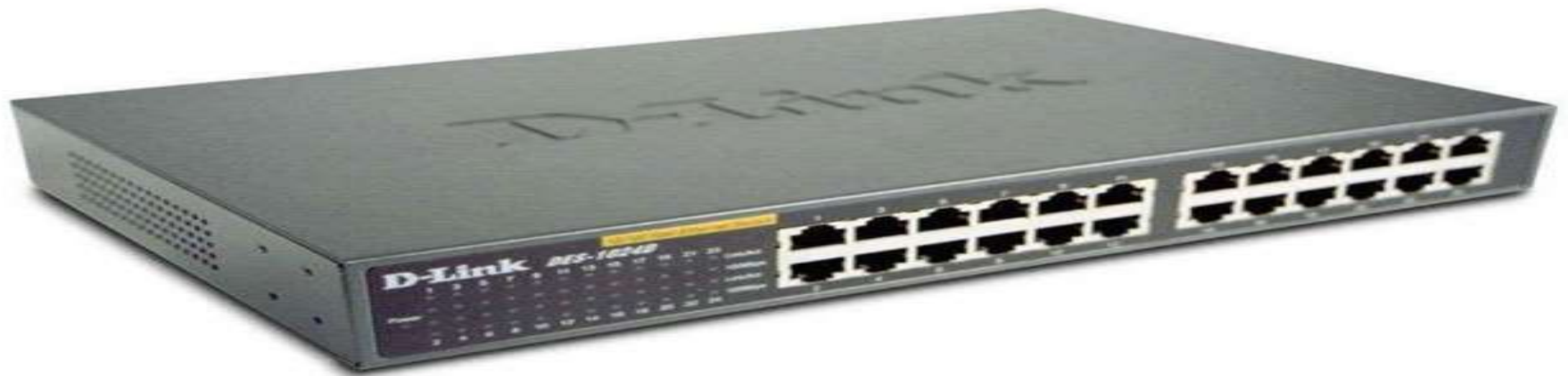
Q11. A game based on which animated franchise propelled AR into the mainstream in recent years?

- a) Pokemon
- b) Super Mario
- c) Legend of Zelda
- d) Sonic the Hedgehog



Q12. A device which is used to boost the signal between two cable segments or wireless access points is

- a) Booster
- b) Repeater
- c) Switch
- d) Router



Q13. A device that helps prevent congestion and data collisions is called

- a) Proxy Server
- b) Hub
- c) Gateway
- d) Switch



Q14. A device that is used to connect a number of LANs is called

- a) Router
- b) Repeater
- c) Bridge
- d) Switch



Q15. Which transmission media has the highest transmission speed in a network?

- a) Coaxial Cable
- b) Twisted Pair cable
- c) Optical Fibre
- d) Electrical Cable

FIND YOUR SCORE

Correct Answers

Score

All Correct : Outstanding

12-14 Correct : Excellent

9-11 Correct : Very Good

5-8 Correct : Good

Less than 5 correct: Need improvement

ANSWERS

1. a) Head Mounted Display
2. b) Motion Trackers
3. b) Immersive, semi-immersive, non immersive
4. C) Phreaking
5. a) Cave (Computer Activated Video Environment. Computing)
6. b) VR
7. c) Networks
8. b) Technology that overlays digital information on top of real world items
9. d) Worm
10. a) A. Mixed Reality
11. a) Pokemon Go took the world by storm in July 2016. The game was developed by Niantic and Nintendo and allowed players to “capture” Pokemon, which they could discover in the real world around them in AR.
12. b) Repeater
13. d)Switch
14. a) Router
15. c) Optical Fibre

THANKS



PUSHPA GUJRAL SCIENCE CITY,
KAPURTHALA